

# (agora)

## NATURAL SHADES

100% Solution Dyed Acrylic  
100% Acrílico Tintado en Masa

In Agora® fabrics, colour pigments impregnate the polymer dissolution before the fibre is formed. That way, the yarn is dyed to the core, conferring an excellent colour fastness and exceptional behaviour in outdoor conditions and in the presence of micro-organisms. The strong link between the carbon is not destroyed, so the colour does not change with the passage of time.



En los tejidos Agora®, los pigmentos impregnan la disolución del polímero antes de formar la fibra. De esa manera, el hilo está tintado hasta el núcleo, lo que le confiere una excelente solidez del color y un comportamiento excepcional en condiciones exteriores y en presencia de microorganismos. El fuerte vínculo entre el carbono no se destruye, por lo que el color no cambia con el paso del tiempo.

|  | BRUMA  | SENDA                |
|--|--|----------------------|
| Width<br>Ancho                               | 160 cm   |                      |
| Weight<br>Peso                               | 400 g/m <sup>2</sup>   | 440 g/m <sup>2</sup> |
| Finish<br>Acabado                            | Water repellent with anti-stain treatment<br>Hidrófugo con tratamiento antimanchas |                      |
| Colour fastness to light<br>Solidez a la luz | 7/8<br>UNE EN ISO 105-B02:2014   |                      |
| Uses<br>Usos                                 |  |                      |
| Cleaning instructions<br>Manutención         |  |                      |

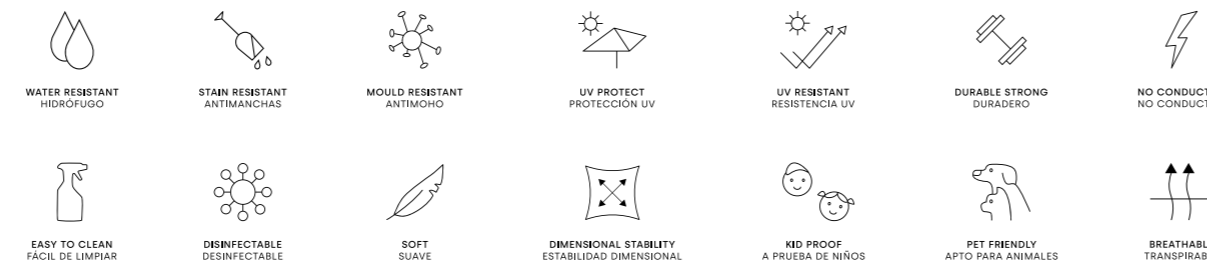
Sensitive values of tolerance +/- 5%. Valores susceptibles de tolerancia de +/- 5%

Optional fabric treatment  
Acabados opcionales

**WATERPROOF**  
IMPERMEABLE  
Water column: 1000mm  
Columna de agua: 1000mm

**safe home** EXTRA SOFTNESS  
SUAVIDAD EXTRA  
+ Resistible: Higher resistance  
Mayor resistencia

Qualities  
Cualidades



The Agora warranty covers the fabric becoming unserviceable as a result of loss of colour or strength from normal exposure conditions, including sunlight, mildew, rot and atmospheric chemicals, when properly installed, used and maintained. The warranty does not cover labour and installation costs supplied by the dealer. The warranty neither applies against deterioration of any kind due to abusive use, accidental burns, negligence or perforations.

La garantía Agora cubre un anormal deterioro del tejido debido a la pérdida de color o resistencia siempre que existan unas condiciones de exposición normales, incluyendo el sol, moho, putrefacción y químicos de la atmósfera en general, siempre y cuando el tejido haya sido instalado, utilizado y mantenido correctamente. La garantía no cubre los trabajos de instalación del distribuidor. La garantía tampoco cubre, en cualquier caso, el deterioro debido al uso abusivo, quemaduras accidentales, negligencia o perforación.

Waterproof and flame retardant treatments: Recommended for cushions and upholstery only. Always use the lamination face inside. Do not expose the coated side to sun or light.  
Tratamientos Waterproof y FR: Recomendado únicamente para cojines y tapicería. Siempre utilizar la cara laminada en el interior y no exponerla al sol o a las inclemencias del clima.



AG38-103

# (agora)

## EXPERIENCE FABRICS



100% SOLUTION DYED ACRYLIC

# NATURAL SHADES

## COLLECTION

# (agora)

Discover more at [www.agorafabrics.com](http://www.agorafabrics.com)

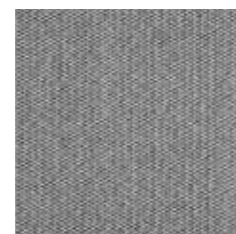




Bruma Niebla  
1007



Senda Niebla  
1032



Bruma Sombra  
1005



Bruma Grafito  
1004



Senda Grafito  
1029



Bruma Oliva  
1016



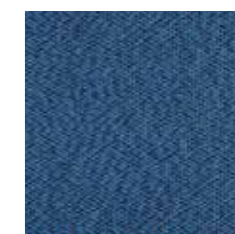
Senda Oliva  
1041



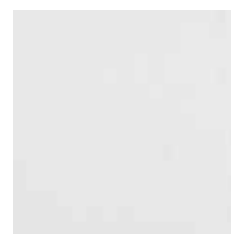
Bruma Lago  
1019



Senda Lago  
1044



Bruma Oceano  
1018



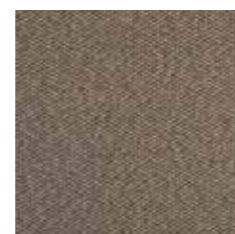
Bruma Nieve  
1021



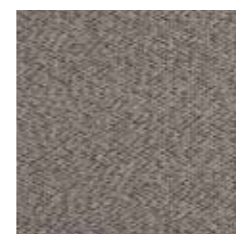
Bruma Ceniza  
1006



Senda Sombra  
1030



Bruma Topo  
1003



Bruma Cacao  
1002



Senda Cacao  
1027



Bruma Musgo  
1017

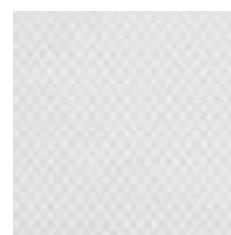


Senda Musgo  
1042

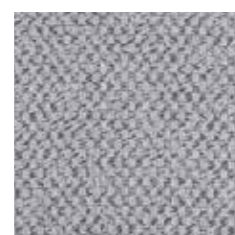
**(agora)**



Senda Oceano  
1043



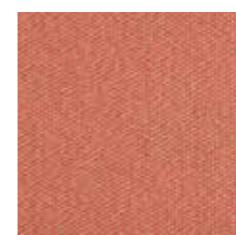
Senda Nieve  
1046



Senda Ceniza  
1031



Senda Topo  
1028



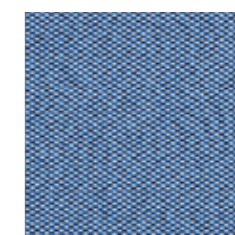
Bruma Teja  
1012



Bruma Liquen  
1015



Senda Liquen  
1040



Bruma Agua  
1020

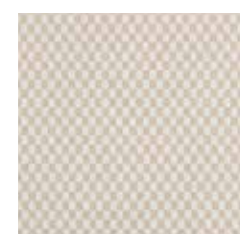


Senda Agua  
1045

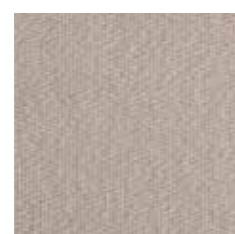
**5**  
YEARS  
WARRANTY



Bruma Avena  
1022



Senda Avena  
1047



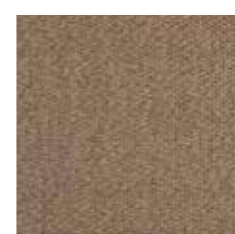
Bruma Nuez  
1009



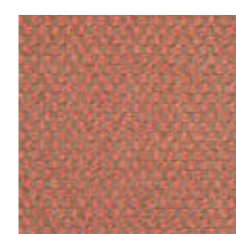
Bruma Almendra  
1001



Senda Almendra  
1026



Bruma Avellana  
1011



Senda Teja  
1037



Bruma Salmón  
1014



Senda Salmón  
1039

**BRUMA**

**SENDA**



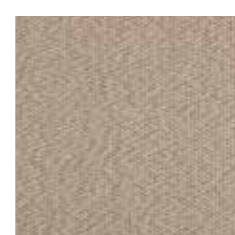
Bruma Dragón  
1008



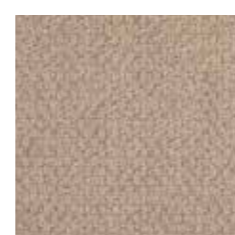
Senda Dragón  
1033



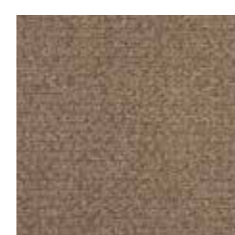
Senda Nuez  
1034



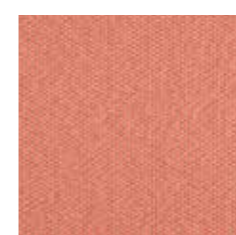
Bruma Esparto  
1010



Senda Esparto  
1035



Senda Avellana  
1036



Bruma Coral  
1013



Senda Coral  
1038

