




Commercial | 95  
95FR  
Heavy

New



Commercial 95  FR  
WHITE 7168 | FR7168



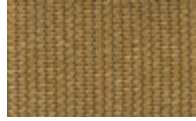
Commercial 95  FR  
NATURAL 7916 | FR7916



Commercial 95  FR  
SAND 7901 | FR7901



Commercial 95  FR  
YELLOW 7907 | FR7907



Commercial 95 CEDAR 7917



Commercial 95  FR  
OCHRE 7906 | FR7906



Commercial 95 BRIGHT GREEN 7836



Commercial 95 ROYAL PURPLE 7897



Commercial 95  FR  
AQUATIC 7910 | FR7910




Commercial 95 NAVY 7905



Commercial 95 ORANGE 7900



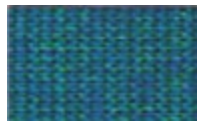
Commercial 95  FR  
CAYENNE 7914 | FR7914








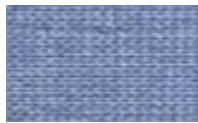
Commercial 95 |  FR  
RED 7903 | FR7903



Commercial 95 TURQUOISE 7912



Commercial 95 |  FR  
RIVERGUM 7902 | FR7902




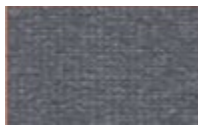
Commercial 95 |  FR  
SKY 7904 | FR7904



Commercial 95  
BRUNSWICK GREEN 7908



Commercial 95 |  FR  
STEEL GREY 7909 | FR7909



Commercial 95 |  FR  
METAL 7913 | FR7913



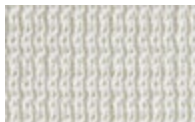
Commercial 95 CHARCOAL 7915



Commercial 95 BLACK 7911

## Commercial Heavy

---



Commercial Heavy WHITE 7932



Commercial Heavy NATURAL 7933



Commercial Heavy STEEL GREY 7934



Commercial Heavy DESERT SAND 7931



## Commercial 95

Our Commercial 95® 340 is the flagship product in our Architectural Shade Fabrics range.

Commercial 95® 340 is the flagship product in Gale Pacific's Architectural Shade Fabrics range. Designed for tension structures and shade sails it is used on a wide variety of applications. Commercial 95® 340 offers the ultimate combination of maximum sun protection, strength and durability to ensure maintenance-free long-life performance. Use it for tension structures and shade sail applications.

Its 100% lead and phthalate-free, and we're proud to state it is the first architectural shade cloth in the world to be granted Oeko-Tex® 100 and Greenguard® certification.

Available in folded 3x40m.

Diseñado para estructuras de tensión y velas de sombra que se utiliza en una amplia variedad de aplicaciones. Commercial 95® 340 ofrece la mejor combinación de protección solar máxima, resistencia y durabilidad para garantizar un rendimiento de larga duración sin necesidad de mantenimiento.

Se utilizan para estructuras de tensión y aplicaciones en velas de sombra. Son 100% libres de plomo y de ftalatos, y es el primer tejido para sombra arquitectónica en el mundo, al que se concede Oeko-Tex® 100 y certificación Greenguard®.

Disponible en rollos 3 m x 40 m que se entregan doblados a 1,50 m.

## Commercial 95 FR

Designed as a flame-retardant fabric for architectural and smaller scale structures.

Commercial 95 FR is a flame-retardant fabric designed to provide the ultimate combination of maximum sun protection, strength and durability to ensure maintenance free long-life performance. Commercial 95 FR is designed to suit a wide range of architectural and small-scale structural applications. It's a safe choice for tension structures, awnings and shade covers in commercial and architectural applications.

Made from a flame-retardant fabric, Commercial 95 FR is stringently tested and conforms to a number of global FR standards, including California State Fire Marshall (CSFM) approval. The specialised lock stitch knit is made from stabilised yarn and is constructed to block up to 95% of harmful rays.

Diseñado como una tela ignífuga para estructuras arquitectónicas y otras de menor escala.

Commercial 95 FR es un tejido ignífugo diseñado para proporcionar la mejor combinación de máxima protección solar, resistencia y durabilidad para garantizar un rendimiento de larga duración sin necesidad de mantenimiento.

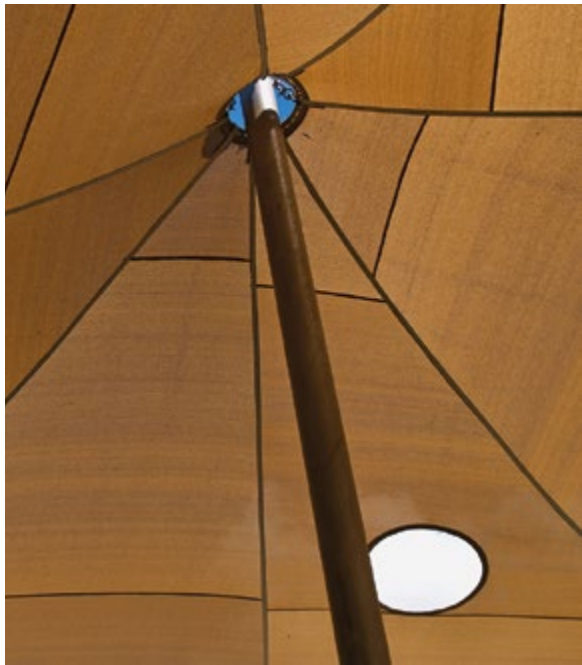
Commercial 95 FR está diseñado para adaptarse a una amplia gama de aplicaciones estructural arquitectónicas y de pequeña escala. Es una opción segura para estructuras tensadas, toldos y cubiertas de sombra en aplicaciones comerciales y arquitectónicas. Hecho de una tela ignífuga, Commercial 95 FR está rigurosamente probado y se ajusta a una serie de normas globales FR, incluyendo California State Fire Marshall (CSFM). El tejido se fabrica a partir de hilados estabilizados y está construido para bloquear hasta el 95% de los rayos nocivos.

## Commercial Heavy 430

Commercial Heavy 430 is specifically developed for large span tension shade structures. With unparalleled biaxial stability it sets the new benchmark in architectural shade fabric. 100% round monofilament architectural shade cloth, engineered for strength and durability in large scale projects. Knitted 100% round monofilament HDPE yarn creates the ultimate combination of tensile strength and biaxial stability for minimal maintenance and lasting performance. Commercial Heavy 430 is your best choice for large span tension shade structures and specific applications such as parking lots or outdoor recreation areas.

El Commercial Heavy 430 está específicamente desarrollado para grandes estructuras con tensión. Con una incomparable estabilidad biaxial, establece un nuevo punto de referencia en tejido de sombra arquitectónica. Desarrollado en Australia específicamente para grandes estructuras de velas de sombra en condiciones extremas, es conveniente para una amplia variedad de aplicaciones desde aparcamientos a parques infantiles. Con una incomparable estabilidad biaxial y capacidad de carga, sus hilos de monofilamento y su patente (pendiente) de patrón de punto entrelazado, aseguran que la estructura de sombra mantendrá su forma de diseño a través del tiempo.





Características técnicas Technical characteristics	Método / Especificación	Commercial 95	Commercial 95 FR	Commercial Heavy
Ancho		3 m	3 m	3 m
Peso	AS 2001.2.13	340 gr/m <sup>2</sup>	340 gr/m <sup>2</sup>	430 gr/m <sup>2</sup>
Grosor		1.6 mm	1.6 mm	1.6 mm
Resistencia Tensión	AS 2001.2.3.1	Urdimbre	670 N/50mm	1600 N/50 mm
		Trama	2400 N/50mm	1400 N/50 mm
Resistencia desgarre	AS 2001.2.10	Urdimbre	184 N	503 N
		Trama	347 N	255 N
<b>Fuerza de rotura</b>	AS 2001.2.3.2	Urdimbre	990 N	1800 N
		Trama	2000 N	1600 N
Presión de rotura	AS 2001.2.19	1937 N	1937 N	2349 N
Resistencia temperatura	AS 1530.2 Flammability Index (0-100)	12	12	21
Longitud de las piezas		40 m	40 m	40 m
Peso de las piezas		44 Kg	44 Kg	54 Kg
Diámetro del rollo		0,32 m	0,32 m	0,30 m
Diámetro del centro		35 mm	35 mm	35 mm



## Commercial 95

Colour	Code	Nom Width*	Length**	Cover Factor	Shade Factor	UV-Vis Trans %	UVR Trans %	UVR Block %	UVE %	Protection Category
Aquatic	7910	3m	40m	92	85.6	14.4	8.9	91.1	91	Very Effective
Black	7911	3m	40m	94	94.6	5.4	5.2	94.8	93	Very Effective
Bright Green	7836	3m	40m	92	88.6	11.4	7.5	92.5	91	Very Effective
Green	7908	3m	40m	94	93.8	6.2	5.3	94.7	93	Very Effective
Cayenne	7914	3m	40m	92	85.3	14.7	7.6	92.4	91	Very Effective
Cedar	7917	3m	40m	93	87.3	12.7	6.4	93.6	93	Very Effective
Charcoal	7915	3m	40m	93	93.1	6.9	6.6	93.4	91	Very Effective
Red	7903	3m	40m	91	78.4	21.6	8.8	91.2	91	Very Effective
Ochre	7906	3m	40m	94	92.8	7.2	5.4	94.6	93	Very Effective
Sand	7901	3m	40m	94	86.1	13.9	6.2	93.8	93	Very Effective
Metal	7913	3m	40m	93	91.4	8.6	6.8	93.2	92	Very Effective
Natural	7916	3m	40m	93	76.2	23.8	6.9	93.1	92	Very Effective
Navy	7905	3m	40m	94	93.6	6.4	5.6	94.4	93	Very Effective
Orange	7900	3m	40m	93	80.6	19.4	6.0	94.0	93	Very Effective
Rivergum	7902	3m	40m	93	88.7	11.3	7.1	92.9	92	Very Effective
Royal Purple	7897	3m	40m	91	87.7	12.3	8.9	91.1	91	Very Effective
Sky	7904	3m	40m	92	89.0	11.0	7.8	92.2	91	Very Effective
Steel	7909	3m	40m	94	90.9	9.1	5.7	94.3	93	Very Effective
Turquoise	7912	3m	40m	92	86.0	14.0	8.5	91.5	91	Very Effective
Yellow	7907	3m	40m	93	91.5	8.5	6.9	93.1	92	Very Effective
White	7168	3m	40m	95	77.6	22.4	4.5	95.5	94	Very Effective

## Commercial 95 FR

Flammability Tests	Result Tests
CSFM 1237.1 Title 19	CERTIFIED
NFPA 701: Method 1 & 2	CONFORMS
NORMA UNE	M1



## Commercial Heavy

Colour	Code	Nom. Width*	Length**	Cover Factor	Shade Factor	UV-Vis Trans %	UVR Trans %	UVR Block %	UVE %
Desert Sand	7931	3.00 m	40m	85.0	79.0	21.0	14.1	85.9	85.0
Natural	7933	3.00 m	40m	88.0	73.9	26.1	12.1	87.9	87.0
Steel Grey	7934	3.00 m	40m	86.0	85.5	14.5	13.5	86.5	86.0
White	7932	3.00 m	40m	86.0	69.0	31.0	13.4	86.6	86.0

### Flammability Tests

Flammability Index AS 1530.2 34

Approx. roll weight: 54 kg

Approx. roll diameter: 0,30 m

Core diameter: 76 mm



SAULEDA, S.A.  
Travessera de les Corts, 102  
08028 Barcelona (Spain)  
Tel. +34 933 397 150  
Fax. +34 934 111 290  
sauleda@sauleda.com  
www.sauleda.com